

Human TREM2 Protein

Cat. No. TRM-HM201

Description

Source	Recombinant Human TREM2 Protein is expressed from HEK293 with hFc tag at the C-Terminus. It contains His19-Ser174.
Accession	Q9NZC2-1
Molecular Weight	The protein has a predicted MW of 44.2 kDa. Due to glycosylation, the protein migrates to 50-70 kDa based on Bis-Tris PAGE result.
Endotoxin	Less than 1EU per μg by the LAL method.
Purity	> 95% as determined by Bis-Tris PAGE

Formulation and Storage

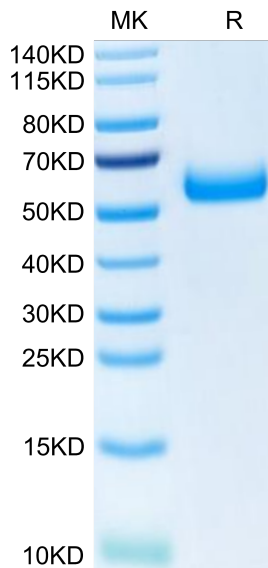
Formulation	Lyophilized from 0.22 μm filtered solution in PBS, 100mM Arginine (pH 7.4). Normally 8% trehalose is added as protectant before lyophilization.
Reconstitution	Centrifuge the tube before opening. Reconstituting to a concentration more than 100 $\mu\text{g}/\text{ml}$ is recommended. Dissolve the lyophilized protein in distilled water.
Storage	-20 to -80°C for 12 months as supplied from date of receipt. -80°C for 3 months after reconstitution. Recommend to aliquot the protein into smaller quantities for optimal storage. Please minimize freeze-thaw cycles.

Background

TREM-2 (Triggering Receptor Expressed on Myeloid cells-2) is a 35 kDa type I transmembrane member of the TREM family and Ig superfamily. Mature human TREM-2 consists of a 156 amino acid (aa) extracellular domain (ECD) with one V-type Ig-like domain, a 21 aa transmembrane (TM) domain, and a 35 aa cytoplasmic tail. TREM-2 forms a receptor signaling complex with TYROBP which mediates signaling and cell activation following ligand binding (PubMed:10799849). Acts as a receptor for amyloid-beta protein 42, a cleavage product of the amyloid-beta precursor protein APP, and mediates its uptake and degradation by microglia.

Assay Data

Bis-Tris PAGE



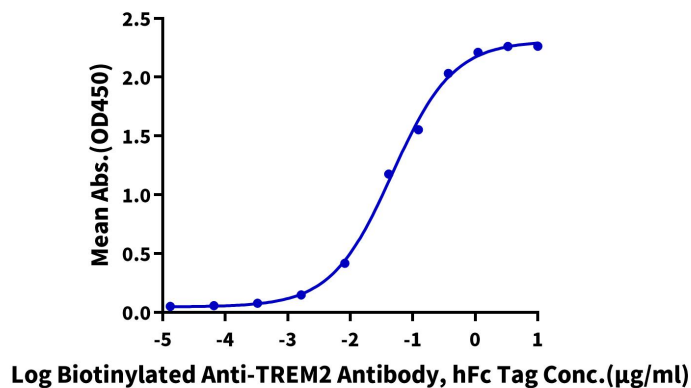
Human TREM2 on Bis-Tris PAGE under reduced condition. The purity is greater than 95%.

ELISA Data

Assay Data

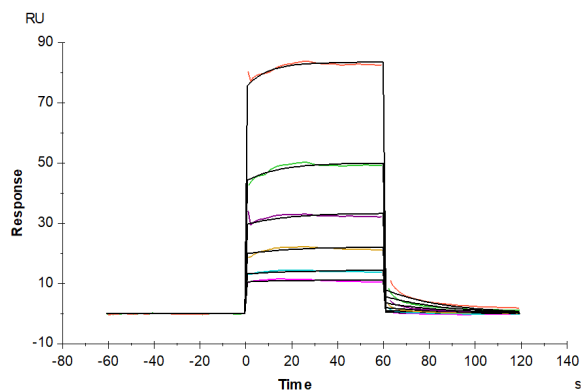
Human TREM2, hFc Tag ELISA

0.2µg Human TREM2, hFc Tag Per Well



Immobilized Human TREM2, hFc Tag at 2µg/ml (100µl/Well) on the plate. Dose response curve for Biotinylated Anti-TREM2 Antibody, hFc Tag with the EC50 of 46.9ng/ml determined by ELISA (QC Test).

SPR Data



Human TREM2, hFc Tag captured on CM5 Chip via Protein A can bind Human APOE3, His Tag with an affinity constant of 1.21 µM as determined in SPR assay (Biacore T200).